

# STAINLESS & CHROME MOLY 5-PACKS



**Stainless Steel & Chrome Moly Bolts Available In Sizes From 1/4" to 7/16" With Underhead Lengths Ranging From 1/2" to 5". Hex or 12-Pt. Heads. Packaged In Convenient 5-Pack Cards.**

Now you can use premium quality ARP stainless steel or chrome moly fasteners to install most anything on a car, boat or trailer. Both the specially alloyed "ARP300" stainless and heat-treated 8740 are nominally rated at **170,000 psi** to provide a substantial extra margin of safety over Grade 8 and other hardware.

What's more, you can't beat the gorgeous looks of ARP's specially polished stainless steel fasteners, and their ability to resist rust. They're truly maintenance free!

You can get 5-packs of any size bolt from 1/4" to 7/16" in lengths ranging from 1/2" to 5", with a choice of hex or 12-point heads. Matching nuts are also available.

Thread Size	Underhead Length	Stainless Steel		Black Oxide	
		Hex	12-Point	Hex	12-Point
1/4-20	0.515	621-0515	611-0515	650-0515	640-0515
1/4-20	0.750	621-0750	611-0750	650-0750	640-0750
1/4-20	1.000	621-1000	611-1000	650-1000	640-1000
1/4-20	1.250	621-1250	611-1250	650-1250	640-1250
1/4-20	1.500	621-1500	611-1500	650-1500	640-1500
1/4-20	1.750	621-1750	611-1750	650-1750	640-1750
1/4-20	2.000	621-2000	611-2000	650-2000	640-2000
1/4-20	2.250	621-2250	611-2250	650-2250	640-2250
1/4-20	2.500	621-2500	611-2500	650-2500	640-2500
1/4-20	2.750	621-2750	611-2750	650-2750	640-2750
1/4-20	3.000	621-3000	611-3000	650-3000	640-3000
1/4-20	3.250	621-3250	611-3250	650-3250	640-3250
5/16-18	0.560	622-0560	612-0560	651-0560	641-0560
5/16-18	0.750	622-0750	612-0750	651-0750	641-0750
5/16-18	1.000	622-1000	612-1000	651-1000	641-1000
5/16-18	1.250	622-1250	612-1250	651-1250	641-1250
5/16-18	1.500	622-1500	612-1500	651-1500	641-1500
5/16-18	1.750	622-1750	612-1750	651-1750	641-1750
5/16-18	2.000	622-2000	612-2000	651-2000	641-2000
5/16-18	2.250	622-2250	612-2250	651-2250	641-2250
5/16-18	2.500	622-2500	612-2500	651-2500	641-2500
5/16-18	2.750	622-2750	612-2750	651-2750	641-2750
5/16-18	3.000	622-3000	612-3000	651-3000	641-3000
5/16-18	3.250	622-3250	612-3250	651-3250	641-3250
5/16-18	3.500	622-3500	612-3500	651-3500	641-3250
5/16-18	3.750	622-3750	612-3750	651-3750	641-3750
5/16-18	4.000	622-4000	612-4000	651-4000	641-4000
5/16-18	4.250	622-4250	612-4250	651-4250	641-4250
5/16-18	4.500	622-4500	612-4500	651-4500	641-4500
5/16-18	4.750	622-4750	612-4750	651-4750	641-4750
5/16-18	5.000	622-5000	612-5000	651-5000	641-5000
3/8-16	0.500	623-0500	613-0500	652-0500	642-0500
3/8-16	0.750	623-0750	613-0750	652-0750	642-0750

Thread Size	Underhead Length	Stainless Steel		Black Oxide	
		Hex	12-Point	Hex	12-Point
3/8-16	1.000	623-1000	613-1000	652-1000	642-1000
3/8-16	1.250	623-1250	613-1250	652-1250	642-1250
3/8-16	1.500	623-1500	613-1500	652-1500	642-1500
3/8-16	1.750	623-1750	613-1750	652-1750	642-1750
3/8-16	2.000	623-2000	613-2000	652-2000	642-2000
3/8-16	2.250	623-2250	613-2250	652-2250	642-2250
3/8-16	2.500	623-2500	613-2500	652-2500	642-2500
3/8-16	2.750	623-2750	613-2750	652-2750	642-2750
3/8-16	3.000	623-3000	613-3000	652-3000	642-3000
3/8-16	3.250	623-3250	613-3250	652-3250	642-3250
3/8-16	3.500	623-3500	613-3500	652-3500	642-3500
3/8-16	3.750	623-3750	613-3750	652-3750	642-3750
3/8-16	4.000	623-4000	613-4000	652-4000	642-4000
3/8-16	4.250	623-4250	613-4250	652-4250	642-4250
3/8-16	4.500	623-4500	613-4500	652-4500	642-4500
3/8-16	4.750	623-4750	613-4750	652-4750	642-4750
3/8-16	5.000	623-5000	613-5000	652-5000	642-5000
7/16-14	1.500	624-1500	614-1500	653-1500	643-1500
7/16-14	1.750	624-1750	614-1750	653-1750	643-1750
7/16-14	2.000	624-2000	614-2000	653-2000	643-2000
7/16-14	2.250	624-2250	614-2250	653-2250	643-2250
7/16-14	2.500	624-2500	614-2500	653-2500	643-2500
7/16-14	2.750	624-2750	614-2750	653-2750	643-2750
7/16-14	3.000	624-3000	614-3000	653-3000	643-3000
7/16-14	3.250	624-3.250	614-3.250	653-3250	643-3250
7/16-14	3.500	624-3500	614-3500	653-3500	643-3500
7/16-14	3.750	624-3750	614-3750	653-3750	643-3750
7/16-14	4.000	624-4000	614-4000	653-4000	643-4000
7/16-14	4.250	624-4250	614-4250	653-4250	643-4250
7/16-14	4.500	624-4500	614-4500	653-4500	643-4500
7/16-14	4.750	624-4750	614-4750	653-4750	643-4750
7/16-14	5.000	624-5000	614-5000	653-5000	643-5000

# STANDARD & NYLOC 5-PACKS



To compliment ARP "bulk" 5-pack chrome moly and stainless steel fasteners we have assembled matching groups of nuts. They, too, come in convenient 5-pack skin cards. Take your pick from stainless steel and black oxide finish standard nuts and stainless steel Nyloc self-locking nuts. Available sizes include 1/4-20, 5/16-18, 3/8-16, 7/16-14 and 1/2-13.

## 5-Packs of Stainless & Chrome Moly Nuts

Thread Size	Style	Stainless Hex	Black Oxide
1/4-20	Standard	400-8651	200-8651
1/4-20	Nyloc	400-8661	
5/16-18	Standard	400-8652	200-8652
5/16-18	Nyloc	400-8662	
3/8-16	Standard	400-8654	200-8654
3/8-16	Nyloc	400-8664	
7/16-14	Standard	400-8656	200-8656
7/16-14	Nyloc	400-8666	
1/2-13	Standard	400-8657	200-8657
1/2-13	Nyloc	400-8667	

# HEX NUTS



Constructed from the finest aerospace-quality materials, these hex nuts are available in most sizes to meet your needs. All hex nuts meet ARP's exacting quality control standards and are black oxidized. All hex nuts are rated **180,000 psi** tensile strength.

Thread Size	Socket Size	Hex (1 PC)	Hex (2 PC-Pack)	Hex (10 PC-Pack)
1/4-28 ①	7/16"	200-8601	200-8621	200-8631
5/16-24	1/2"	200-8602	200-8622	200-8632
11/32-24	1/2"	200-8603	200-8623	200-8633
3/8-24	9/16"	200-8604	200-8624	200-8634
7/16-20	5/8"	200-8605	200-8625	200-8635
7/16-20	11/16"	200-8606	200-8626	200-8636
1/2-20	3/4"	200-8607	200-8627	200-8637
9/16-18	7/8"	200-8608	200-8628	200-8638

① This nut comes cad-plated.

# 12-POINT NUTS



Available in a variety of sizes to suit your needs, all ARP 12-point nuts are constructed from aerospace-quality materials and meet their high standards of excellence. Rated **180,000 psi** tensile strength.

Thread Size	Socket Size	12-Point (Per PC)	12-Point (2 PC-Pack)	12-Point (10 PC-Pack)	12-Point (SS per PC)
1/4-28	5/16"	300-8300	300-8320	300-8330	
5/16-24	3/8"	300-8301	300-8321	300-8331	400-8301
3/8-24	7/16"	300-8302	300-8322	300-8332	400-8302
7/16-20	1/2"	300-8303	300-8323	300-8333	
1/2-20	9/16"	300-8304	300-8324	300-8334	
1/2-20	5/8"	300-8306	300-8326	300-8336	
9/16-18	11/16"	300-8305	300-8325	300-8335	
5/8-18	3/4"	300-8309	300-8329	300-8339	
8mm x 1.00	3/8"	300-8340	300-8350	300-8360	
9mm x 1.00	7/16"	300-8341	300-8351	300-8361	
9mm x 1.25	7/16"	300-8342	300-8352	300-8362	
10mm x 1.25	7/16"	300-8343	300-8353	300-8363	
10mm x 1.25	1/2"	300-8344	300-8354	300-8364	
10mm x 1.50	1/2"	300-8345	300-8355	300-8365	
12mm-1.25	9/16"	300-8307	300-8327	300-8337	
*12mm-1.25	9/16"	300-8308	300-8328	300-8338	

\*Small collar

Red part numbers indicate new items.

# GENERAL PURPOSE NUTS



These hex nuts with flanged collars are available especially for carburetor, valve cover, front cover, oil pan studs and windage tray studs. Made from premium-quality material, they are black oxidized or cad-plated. All general purpose nuts are rated **150,000 psi** tensile strength.

Thread Size	Socket Size	Hex (1 PC)	Hex (2 PC-Pack)	Hex (10 PC-Pack)
1/4-28	7/16"	200-8609	200-8629	200-8639
5/16-24 ①	1/2"	200-8610	200-8620	200-8630
3/8-24 ①	9/16"	200-8600	200-8640	200-8650

① This nut comes cad-plated.

Note: Do not use on cylinder heads, mains, or rods!

# SPECIAL PURPOSE WASHERS

A true high performance washer from ARP, available in a variety of sizes and thickness, and with or without I.D. (inside diameter) chamfers. All are constructed from premium chrome moly and are parallel-ground, hardened, and finished in black oxide. Our 3/8" I.D. washers, for example, come in four different sizes (O.D.) and different thicknesses. Special connecting rod washers are available, as are some of the more popular metric sizes. All of the washers are available individually, with most of them also offered in handy 2-piece and 10-piece packages. Build up an inventory of these premium quality washers so you won't get caught short when the need arises.



Application	Inside Dia.	Outside Dia.	Thickness	1 PC. Pack	2 PC. Pack	10 PC. Pack
Washer, no I.D. chamfer	3/8"	5/8"	.120	200-8504	200-8544	200-8554
Washer, with I.D. chamfer	3/8"	5/8"	.062	200-8505		
Washer, no I.D. chamfer	3/8"	.675"	.120	200-8506	200-8546	200-8556
Washer, no I.D. chamfer	3/8"	3/4"	.120	200-8507		
Washer, with I.D. chamfer	3/8"	3/4"	.120	200-8517	200-8547	200-8557
Washer, radiused O.D., no I.D. chamfer	3/8"	7/8"	.150	200-8508		
Washer, with I.D. chamfer	7/16"	13/16"	.120	200-8509	200-8529	200-8539
Washer, no I.D. chamfer	7/16"	13/16"	.120	200-8510	200-8520	200-8530
Washer, with I.D. chamfer, stainless	7/16"	13/16"	.120	400-8509	400-8529	400-8539
Connecting rod washer, with I.D. chamfer	7/16"	.675"	.062	200-8501		
Connecting rod washer, with I.D. chamfer	7/16"	3/4"	.073	200-8502		
Washer, no I.D. chamfer	7/16"	3/4"	.120	200-8511	200-8521	200-8531
Washer, with I.D. chamfer	7/16"	3/4"	.120	200-8518	200-8548	200-8558
Washer with I.D. chamfer	7/16"	7/8"	.120	200-8512	200-8522	200-8532
Washer with I.D. chamfer	1/2"	7/8"	.120	200-8513	200-8523	200-8533
Washer, no I.D. chamfer	1/2"	7/8"	.120	200-8514	200-8524	200-8534
Washer, no I.D. chamfer	9/16"	1"	.120	200-8515	200-8525	200-8535
Washer, no I.D. chamfer	10mm	3/4"	.120	200-8519		
Washer, no I.D. chamfer	12mm	3/4"	.120	200-8516		
Washer, no I.D. chamfer	12mm	7/8"	.120	200-8500		

# GENERAL PURPOSE WASHERS



Quality washer for many applications, such as attaching accessories, chassis components, etc. They are not of the hardness required for use on cylinder heads, mains and connecting rods.. Available in black oxide and Stainless Steel. Stainless demonstrates excellent corrosion resistance. Washers have over-sized I.D. (inside diameter) to clear most under-bolt head radii. Available for 1/4, 5/16, 3/8, 7/16 and 1/2" shank bolts and studs.

**Note: Not for use on cylinder heads, mains, or rods!**

Application	Inside Dia.	Outside Dia.	Thickness	Black Oxide	Stainless
General purpose washer	1/4"	1/2"	.063	200-8401	200-8414
General purpose washer	1/4"	9/16"	.063	200-8408	200-8409
General purpose washer	5/16"	9/16"	.063	200-8402	200-8403
General purpose washer	5/16"	5/8"	.063	200-8410	200-8411
General purpose washer	3/8"	5/8"	.063	200-8404	200-8405
General purpose washer	3/8"	11/16"	.075	200-8412	200-8413
General purpose washer	7/16"	3/4"	.063	200-8406	
General purpose washer	1/2"	7/8"	.063	200-8407	

# INSERT WASHERS

Size I.D.	Size O.D.	1 PC-Pack	2 PC-Pack	10 PC-Pack
1/4	.317	200-8560	200-8565	200-8570
5/16	.380	200-8561	200-8566	200-8571
3/8	.443	200-8562	200-8567	200-8572
7/16	.506	200-8563	200-8568	200-8573
1/2	.565	200-8564	200-8569	200-8574

Red part numbers indicate new items.

These handy washers are made to protect the top of holes from galling or collapsing around studs or bolts. They're ideal for head bolt holes, mid-motor plates, or any other high-wear area that requires a washer. Easy to install by just oversizing hole and pressing in washer. ARP Insert Washers are fully CNC machined from premium thru-hardened 8740 stock.



# PLATE NUTS

Plate Nuts are quick and efficient way to provide a captive self-locking nut wherever you might need one. Ideal for use in difficult to reach areas, particularly when in a hurry. Available in a wide variety, these represent a selection of popular applications. Can be riveted, screwed or welded in position. Made of carbon alloy steel. Finished in cadmium and chromate.



### Floating, with Replaceable Nut

Size	NAS	Part No.
10-32	-3	200-9111
1/4-28	-4	200-9112
5/16-24	-5	200-9113

### 2-Lug, Fixed

Size	NAS	Part No.
10-32	-3	200-9101
1/4-28	-4	200-9102
5/16-24	-5	200-9103
3/8-24	-6	200-9104

### 2-Lug, Fixed with Counter Sunk Rivet Holes

Size	NAS	Part No.
10-32	-3	200-9106
1/4-28	-4	200-9107
5/16-24	-5	200-9108

### Replacement Nut

Size	NAS	Part No.
10-32	-3	200-9116
1/4-28	-4	200-9117
5/16-24	-5	200-9118
3/8-24	-6	200-9119

### Retaining Clips

Size	NAS	Part No.
10-32	3-3K	200-9201
1/4-28	4-4K	200-9202
5/16-24	5-5K	200-9203

**Right Angle, Miniature Floating Panel Fastener**

Size	Part No.
4-40	200-9121
6-32	200-9122

# SELF-LOCKING NUTS

For high stress, high temperature and severe vibration—all metal six point Jet-nuts and 12-point K-nuts are ideal for use practically everywhere. Features include elliptically offset, light weight, temperature resistant, positive locking and almost indefinitely reusable. The upper portion of the nut is distorted or offset elliptically. The elastic deformation creates a friction hold sufficient to lock the nut. Made of carbon alloy steel, cadmium and chromate finish.



### Hex (Jet Nut)



Size	NAS	Part No.
10-32	-3	200-8101
1/4-28	-4	200-8102
5/16-24	-5	200-8103
3/8-24	-6	200-8104



### 12-Point Reduced Wrenching

Size	NAS	Part No.
10-32	-3	200-8201
1/4-28	-4	200-8202
5/16-24	-5	200-8203
3/8-24	-6	200-8204

### Hex, 1/2 Height, Drilled



Size	NAS	Part No.
10-32	-3	200-8112
1/4-28	-4	200-8113
5/16-24	-5	200-8114
3/8-24	-6	200-8115

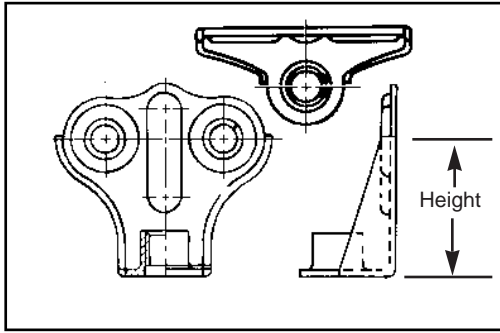


### Hex, 1/2 Height

Size	NAS	Part No.
10-32	-3	200-8107
1/4-28	-4	200-8108
5/16-24	-5	200-8109
3/8-24	-6	200-8110

# STAND-OFF BRACKETS

These handy devices are excellent for attaching hydraulic lines, control cables or wire bundles to the chassis. They're stamped from 125,000 psi steel, heat treated, and cadmium plated for extra durability. They have a ribbed back for extra strength. Attach with 10.32 bolts. Available in three heights.



Application	Part No.
10.32 x .465" Height	200-9301
10.32 x .665" Height	200-9302
10.32 x .865" Height	200-9303



# WELD BUNGS

ARP has introduced a line of premium quality weld-in bungs. The parts are CNC machined from solid aluminum billet (6061) or 1018 mild steel. Applications include, but are not limited to: oil or fuel tanks, radiators, valve covers, manifolds, and rear axle housings. Fittings are available with female pipe threads, male AN, and female O-ring types. The fittings come in sizes: 1/4, 3/8, 1/2, 3/4, and 1 inch sizes; NPT -6 thru -20 AN; and -6 thru 120 O-ring sizes.

**NPT**

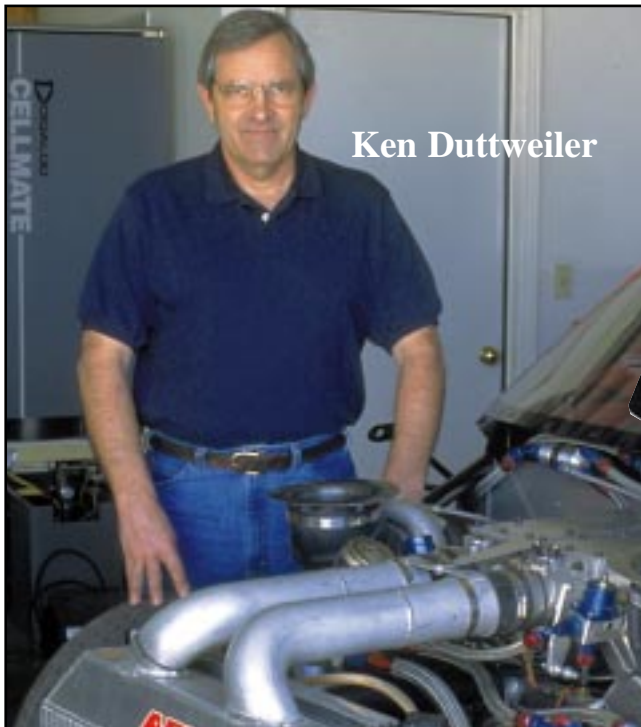
**AN Male**

**AN O-Ring**

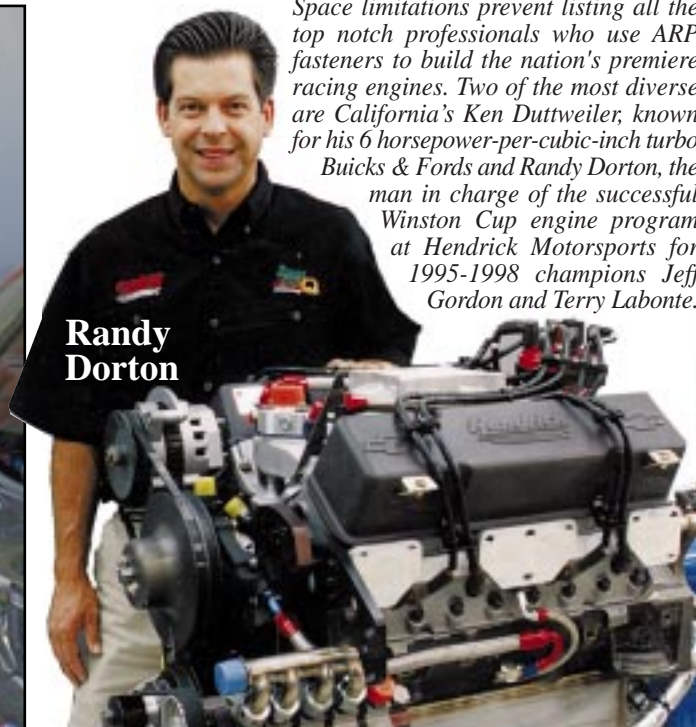
Aluminum		Steel	
Size	Part No.	Size	Part No.
1/4"	800-8101	1/4"	800-8201
3/8"	800-8102	3/8"	800-8202
1/2"	800-8103	1/2"	800-8203
3/4"	800-8104	3/4"	800-8204
1"	800-8105	1"	800-8205

Aluminum		Steel	
Size	Part No.	Size	Part No.
AN6	800-8106	AN6	800-8206
AN8	800-8107	AN8	800-8207
AN10	800-8108	AN10	800-8208
AN12	800-8109	AN12	800-8209
AN16	800-8110	AN16	800-8210
AN20	800-8111	AN20	800-8211

Aluminum		Steel	
Size	Part No.	Size	Part No.
-6	800-8112	-6	800-8212
-8	800-8113	-8	800-8213
-10	800-8114	-10	800-8214
-12	800-8115	-12	800-8215
-16	800-8116	-16	800-8216
-20	800-8117	-20	800-8217



**Ken Duttweiler**



**Randy Dorton**

Space limitations prevent listing all the top notch professionals who use ARP fasteners to build the nation's premiere racing engines. Two of the most diverse are California's Ken Duttweiler, known for his 6 horsepower-per-cubic-inch turbo Buicks & Fords and Randy Dorton, the man in charge of the successful Winston Cup engine program at Hendrick Motorsports for 1995-1998 champions Jeff Gordon and Terry Labonte.