

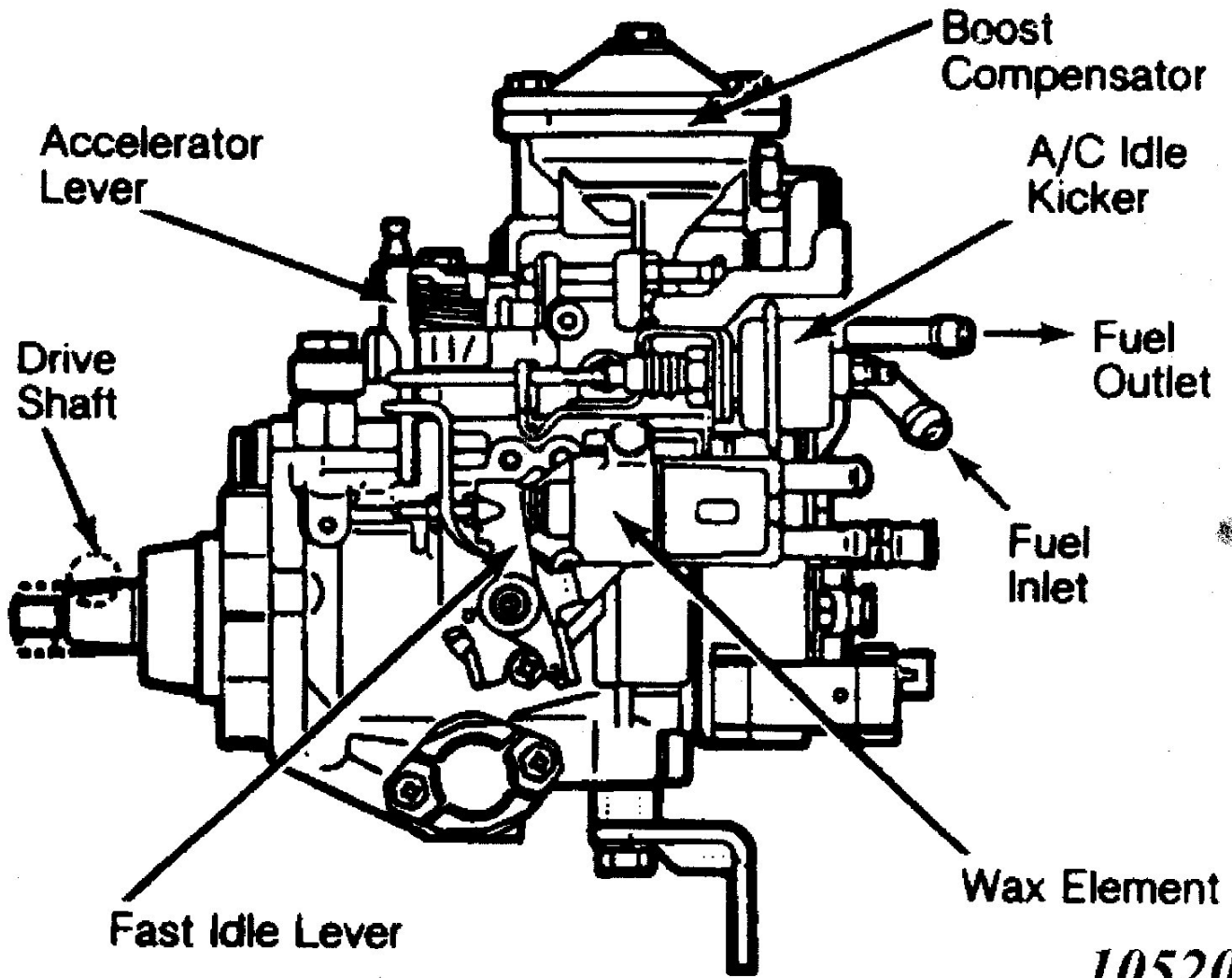
**1986 Ford Ranger**

1986 ENGINE PERFORMANCE Diesel Tune-Up

**COMPRESSION SPECIFICATIONS (2.3L)****COMPRESSION SPECIFICATIONS (2.3L)**

<b>Application</b>	<b>Specification</b>
Compression Ratio	21.0:1
Compression Pressure	384-340 psi (26.9-23.9 kg/cm <sup>2</sup> )
Maximum Pressure Variation	43 psi (3.0 kg/cm <sup>2</sup> )

Fig. 1: Fuel Injection Pump  
1986 Ford Ranger



**10520**

**1986 Ford Ranger****1986 ENGINE PERFORMANCE Diesel Tune-Up****COMPRESSION SPECIFICATIONS (6.9L)****COMPRESSION SPECIFICATIONS (6.9L)**

<b>Application</b>	<b>Specification</b>
Compression Ratio	20.7:1
Maximum Pressure Variation <sup>(1)</sup>	
260 psi (18.3 kg/cm <sup>2</sup> )	195 psi (13.7 kg/cm <sup>2</sup> )
280 psi (19.7 kg/cm <sup>2</sup> )	210 psi (14.8 kg/cm <sup>2</sup> )
300 psi (21.0 kg/cm <sup>2</sup> )	225 psi (15.8 kg/cm <sup>2</sup> )
320 psi (22.5 kg/cm <sup>2</sup> )	240 psi (16.9 kg/cm <sup>2</sup> )
340 psi (23.9 kg/cm <sup>2</sup> )	255 psi (17.9 kg/cm <sup>2</sup> )
360 psi (25.3 kg/cm <sup>2</sup> )	270 psi (18.9 kg/cm <sup>2</sup> )
380 psi (26.7 kg/cm <sup>2</sup> )	285 psi (20.0 kg/cm <sup>2</sup> )
400 psi (28.1 kg/cm <sup>2</sup> )	300 psi (21.0 kg/cm <sup>2</sup> )
420 psi (29.5 kg/cm <sup>2</sup> )	315 psi (22.1 kg/cm <sup>2</sup> )
440 psi (30.9 kg/cm <sup>2</sup> )	330 psi (23.2 kg/cm <sup>2</sup> )

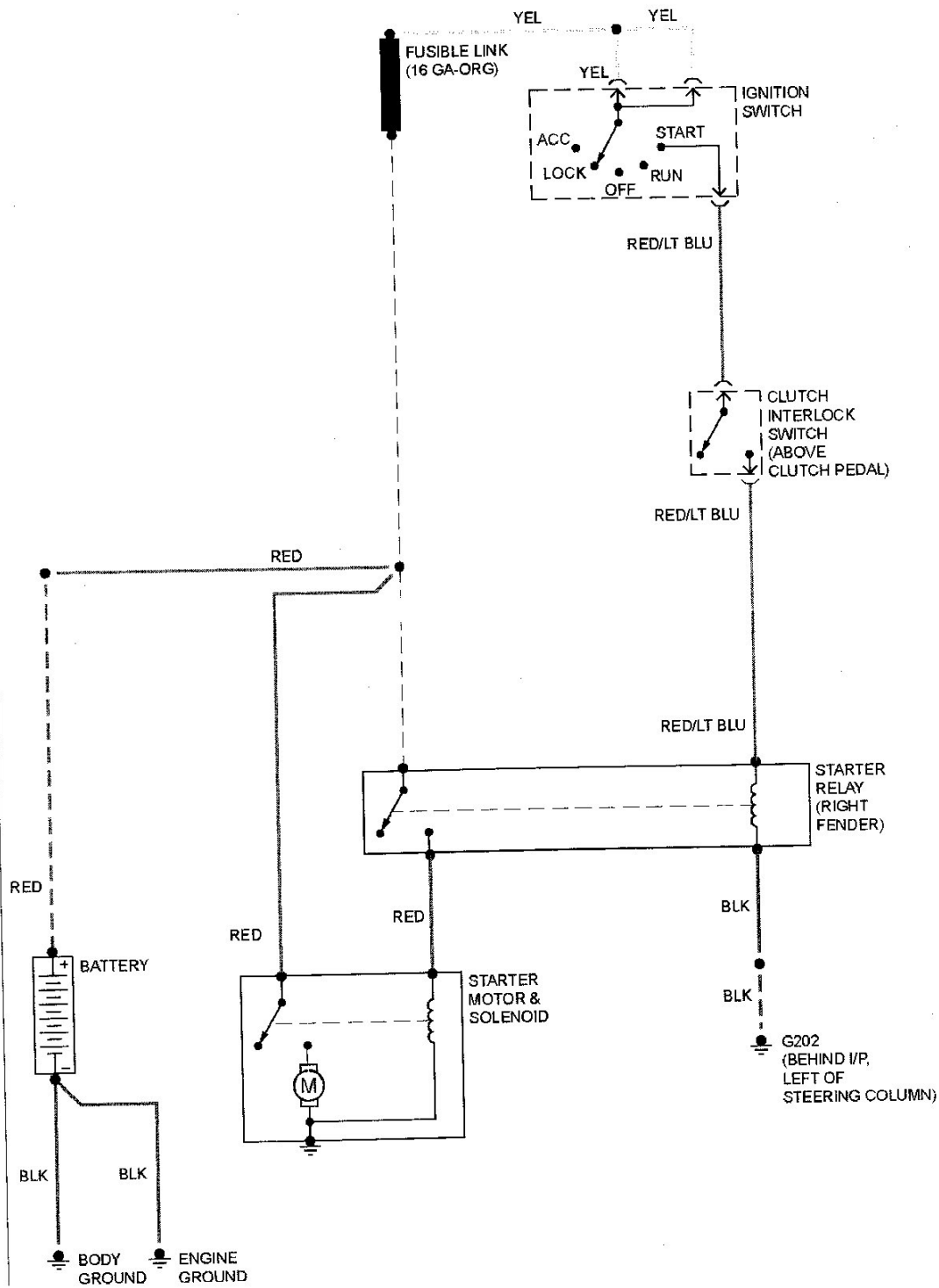
(1) Left column represents highest cylinder reading. Right column represents lowest cylinder reading.

# 1986 Ford Ranger

## SYSTEM WIRING DIAGRAMS - RANGER

### Fig. 16: 2.3L Diesel, Starting Circuit

© 1994 VFTC



1986 Ford Ranger

SYSTEM WIRING DIAGRAMS - RANGER

Fig. 15: 2.3L Diesel, Charging Circuit

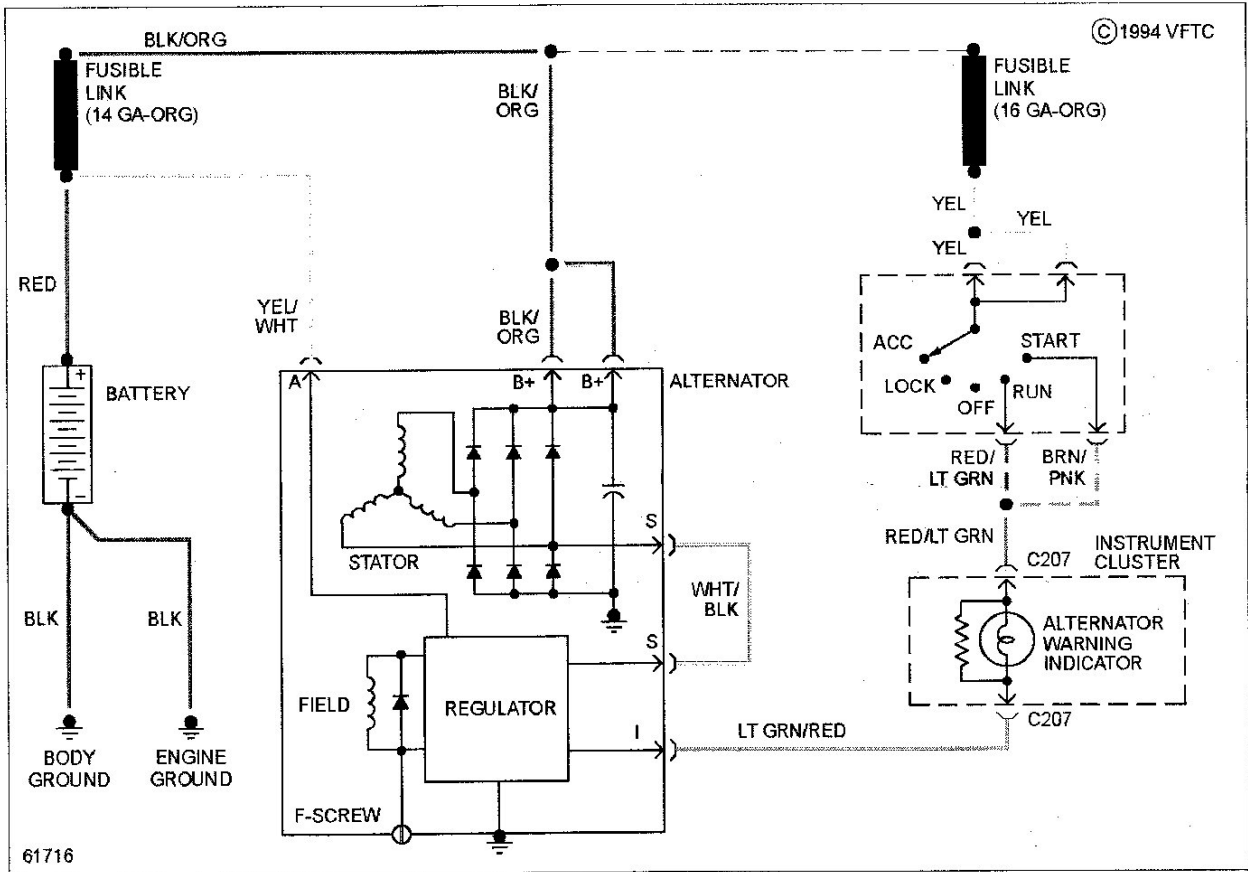
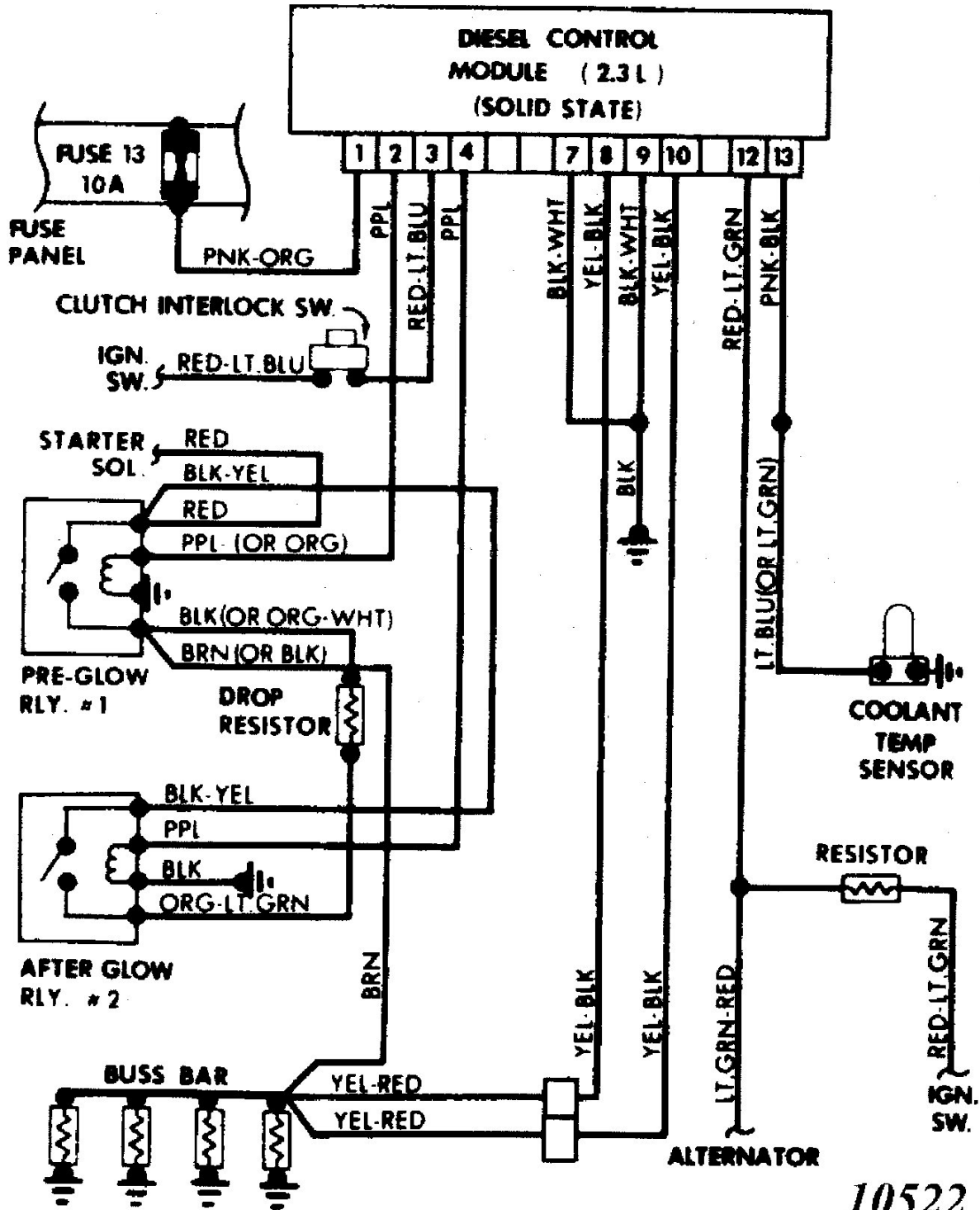


Fig. 3: Glow Plug System Wiring Diagram  
1986 Ford Ranger



10522